



2025 VAN RENSSELAER RACE WEEKEND

Saturday, June 28, 2025 - Pursuit Race

Sunday, June 29, 2025 - One Design Race(s)

Marion, Massachusetts 02738

The Organizing Authority (OA) is the Beverly Yacht Club (BYC)

NOTICE OF RACE

'[DP]' means that rule may be subject to a discretionary penalty.

'[NP]' means that a boat may not protest another boat for breaking that rule. This changes RRS 60.1 (Right to Protest).

1. RULES

- 1.1. The race is governed by the rules as defined in the *Racing Rules of Sailing 2025-2028* (RRS).
- 1.2. [DP] Competitors and support persons shall comply with reasonable requests from the race officials.
- 1.3. All competitors are reminded about the importance of compliance with RRS 2 (Fair Sailing), RRS 4 (Acceptance of the Rules), and RRS 65 (Legal Liability and Costs), in any BYC racing event.
- 1.4. [NP] In accordance with RRS 40.2, RRS 40.1 (Personal Flotation Device) applies.
- 1.5. For PHRF boats,
 - 1.5.1 RRS 52 (Manual Power) is amended as provided for under RRS 86.1(b) (Changes to the Racing Rules) as follows: Competitors are permitted to use electrically powered winches for running rigging while racing.
 - 1.5.2 [DP] Competitors are required to remove anchors from their bow pulpits while racing.
- 1.6 One-design boats in compliance with their respective class rules are eligible to race in one-design class races.
- 1.7 Bullseye Class:
 - 1.6.1 RRS 60.2(a)(1) (Intention to Protest) the phrase "if her hull length is longer than 6 metres," is deleted. A red flag must be displayed when protesting.
 - 1.6.2. Genoas are not permitted.
- 1.8 H-12 Class:
 - 1.7.1. RRS 60.2(a)(1) (Intention to Protest) the phrase "if her hull length is longer than 6 metres," is deleted. A red flag must be displayed when protesting.
 - 1.7.2. Under RRS 87 (Changes to Class Rules), *H12 Class Rule* under "Bylaw II, Purpose 1," will be changed to allow Cape Cod Shipbuilding versions of the H12 to

participate in all BYC special races. An H Class letter regarding this change is posted on the bulletin board on the BYC porch.

1.9. Shields Class:

Under RRS 87 (Changes to Class Rules), *Shields Class Rule III-4.0*, "Basic Rules Governing Deviations from the Specifications," will be changed to allow for the use of experimental spinnakers, carbon fiber spinnaker poles, and loose-footed mainsails. A Shields Class letter regarding this change is posted on the bulletin board on the BYC porch.

1.10 J/80 Class:

Races are "Open" events in accordance with Section C of the J/80 Class Rules.

2 SAILING INSTRUCTIONS

- 2.1. Sailing Instructions will be available on Friday, June 20, 2025. Printed copies will be available from the BYC Office upon request.
- 2.2. Pursuit race Sailing Instructions will be posted at <https://www.regattanetwork.com/event/29031>
- 2.3. One Design race Sailing Instruction will be posted at <https://www.regattanetwork.com/event/29032>

3. COMMUNICATION

- 3.1. Notices to competitors will be posted on the official notice board for the races in Regatta Network and courtesy copies may be posted on the bulletin board on the porch at the Beverly Yacht Club.
 - 3.1.1. Pursuit race notices will be posted at <https://www.regattanetwork.com/event/29031>
 - 3.1.2. One Design race notices will be posted at <https://www.regattanetwork.com/event/29032>
- 3.2. Scratch sheets for the Pursuit Race will be made available at 0900 at the Beverly Yacht Club Bar and through each registrant's email on the day of the event, if not sooner.
- 3.3. All boats shall carry a VHF radio capable of communicating on VHF radio CH 72.
- 3.4. [DP] While racing, from the first warning signal until the last boat finishes, except in an emergency, a boat shall not make or receive voice or data transmissions that are not available to all boats.

4. ELIGIBILITY AND ENTRY

4.1. Pursuit Race

- 4.1.1. This race is open to all monohull sailboats. A current, valid PHRF-NE certificate is required for all PHRF sailboats. New or renewal PHRF certificates can be acquired from PHRF New England at <http://www.phrfne.org>. Yachts with other rating certificates may apply to the Beverly Yacht Club PHRF representative for an unofficial rating. A yacht or class fleet with a provisional certificate or unofficial rating must submit to the Event Chair a request in writing for permission to participate in the Pursuit Race. A preliminary list of accepted one design class PHRFNE Base Ratings exists for many boats including for example Shields, J/24's, J/70's, and J/80's. The Race Committee, at its sole discretion,

may or may not allow a yacht/class with a provisional certificate or unofficial rating to participate in the race.

- 4.1.2. Eligible pursuit/handicap sailboats may enter by completing the entry form online in Regatta Network at <https://www.regattanetwork.com/event/29031> by 1800 on Thursday, June 26, 2025.

4.2. One Design Race

- 4.2.1. Bullseyes and H12's are eligible for the one design race on Sunday.
- 4.2.2. Eligible Bullseyes and H12 boats may enter by completing the entry form online in Regatta Network at <https://www.regattanetwork.com/event/29032> by 1800 on Thursday, June 26, 2025.

5. FEES

- 5.1. Non-BYC sailboats will pay an entry fee of \$75 at the time of registration.
- 5.2. There is no fee for a Beverly Yacht Club member sailboat.

6. SCHEDULE

- 6.1. The first warning signal on Saturday, June 28, 2025, for the Pursuit Race for handicap boats will be at 1155.
- 6.2. The first warning signal on Sunday, June 29, 2025, for One Design Race(s) will be at 1330.
- 6.3. It is the intention of the OA to have both the Pursuit and One Design races conclude before 1700 on the day of the races.

7. INSPECTION/MEASUREMENT

Sailboats competing are subject to inspection and/or measurement by the Marion Fleet Handicapper, Event Chair, Principal Race Officer, or Race Committee Chair at any time. A boat may be excluded from racing for failure to meet safety requirements or failure to comply with its racing handicap certificate or class rules. The Race Committee, at its sole discretion, may or may not allow a sailboat to participate in a race.

8. VENUE

Racing will take place in outer Sippican Harbor and Buzzards Bay

9. COURSES

The courses will use the Beverly Yacht Club Race Marks – 2025 chart and the course designations will be on the scratch sheet for the Pursuit Race and displayed on the committee boat for the One Design Race(s). See *Attachment 2* for mark locations.

10. PENALTIES

- 10.1. RRS Appendix V will apply in its entirety.
- 10.2. All post-race penalties must be taken before the protest time limit regardless of whether a protest was filed. This changes RRS V2(a).

11. PRIZES

Prizes will be awarded at Cups and Flags at BYC on October 4, 2025:

- The Goodwin-Thacher Trophy is awarded to the winner in a race for Bullseyes
- The Mary C.B. Cumming Memorial Trophy is awarded to the winner in a race for H12s
- The Van Rensselaer Memorial Trophy is awarded to the winner of the PHRF Pursuit Race.

- The Thacher Family Trophy is awarded to the first Shields crossing the finish line in the Pursuit Race.
- If circumstances allow, prizes and special awards may also be awarded.

12. MEDIA

Competitors give absolute right and permission for any photography and video footage taken of themselves or the boat they are sailing during the event to be published in BYC publications and/or on its website and social media pages.

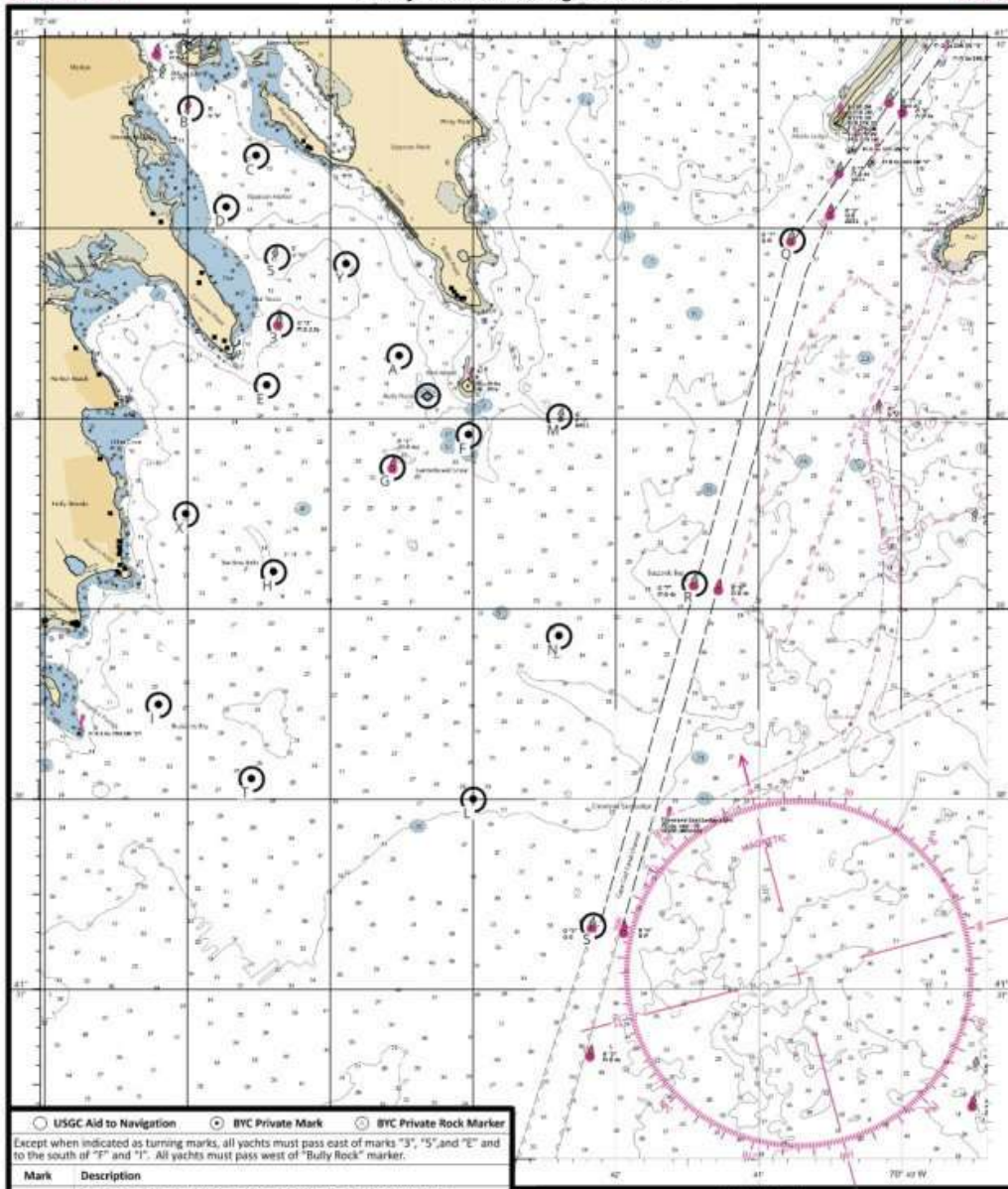
13. RISK STATEMENT AND DISCLAIMER OF LIABILITY

RRS 3 states: “The responsibility for a boat’s decision to participate in a race or to continue racing is hers alone.” By participating in this event each competitor agrees and acknowledges that sailing is a potentially dangerous activity with inherent risks. These risks include strong winds and rough seas, sudden changes in weather, failure of equipment, boat handling errors, poor seamanship by other boats, loss of balance on an unstable platform and fatigue resulting in increased risk of injury. **Inherent in the sport of sailing is the risk of permanent, catastrophic injury or death by drowning, trauma, hypothermia, or other causes.** The organizing authority will not and does not accept any liability for material damage or personal injury, or death sustained in conjunction with, or prior to, during or after racing.

14. ADDITIONAL INFORMATION

Competitors may contact the following individuals for additional information:

BYC Race Chairman: Ken Deyett	racing@beverlyyachtclub.org
PHRF Fleet Representative: Barry Steinberg	bmjb@comcast.net
Race Officer (Pursuit): Ed Dailey	ejdnetwork@gmail.com
Race Officer (One-Design): Susan Mead	semead@aol.com
Protest chair: Peter Quandt	protest@beverlyyachtclub.org



○ USGC Aid to Navigation ● BYC Private Mark ○ BYC Private Rock Marker
 Except when indicated as turning marks, all yachts must pass east of marks "3", "5", "5" and "E" and to the south of "F" and "I". All yachts must pass west of "Bully Rock" marker.

Mark	Description
3	Sippican Harbor Lighted Green Buoy "3" (FI G 2.5) East of Converse Point
5	Sippican Harbor Green Can "5" East of Seal Rocks
8	Woepecket Rock Lighted Red Gong "8" (FI R 5s) (off chart)
A	BYC Yellow Can "A" West of Butler Point
B	Sippican Harbor Red Nun "6" South of Ram Island
C	BYC Yellow Can "C" West of Planting Island
D	BYC Yellow Can "D" Northeast of Seal Rocks
E	BYC Yellow Can "E" Southeast of Converse Point
F	BYC Yellow Can "F" South of Bird Island
G	Sippican Harbor Lighted Red Buoy "2" (FI R 4s) Centerboard Shoal, SW of Bird Island
H	BYC Yellow Can "H" at The Bow Bells, East of Point Connett, Mattapoisett
I	BYC Yellow Can "I" East of Angelica Point
K	West Island Red Bell "256" (off chart)
L	BYC Yellow Can "L" West of Cleveland Ledge Light
M	Bird Island Green Bell "3" Southeast of Bird Island
N	BYC Yellow Can "N" Southeast of Bird Island
Q	Hog Island Channel Lighted Green Buoy "3" (Q G) Southwest of Abiels Ledge
R	Cleveland Ledge Channel Lighted Green Gong "7" (FI G 4s) NE of Cleveland Light
S	Cleveland Ledge Channel Lighted Green Buoy "3" (Q G) SW of Cleveland Light
T	BYC Yellow Can "T" Southeast of Angelica Point
X	BYC Yellow Can "X" East of Pease's Point
Y	BYC Yellow Can "Y" Southwest of the Cliffs
Z	Buzzards Bay Lighted Red Gong "10" (FI R) Southeast of West Island (off chart)
Bully Rock	BYC White Can with orange diamond two sides and two orange horizontal bands

Portable Marks

Mark	Description
2	Gate Mark companion to prior posted Mark (see Red/Green bands for side placement)
4	Turning lbe Mark used with a Triangle Course
J	Turning Mark to Leeward of Start/Finish Line
D	Offset Turning Mark near Windward Turning Mark
P	Alternate Finish Line Pin directly on opposite side of Signal Boat from Starting Line
U	Pin End of Start/Finish Line to Port of Signal Boat
V	Turning Mark a short distance to Windward of Start/Finish Line
W	Windward Turning Mark at bearing and distance posted on Signal Boat

BYC Class Flags

PHRF 1	PHRF 2	PHRF 3
Bullseye	H-12	Shields
		J/80

Attachment 2 - Mark Table – BYC Racing 2025

Mark locations are used to generate the headings and distances between marks for the purpose of setting racecourses. BYC racing marks have been placed as accurately as possible at the locations specified, however they may move and should not be relied on for navigation.

Mark	Description	Latitude (N)	Longitude (W)
2	Portable Gate Mark Companion to Prior Posted Mark	Portable Mark	
3	Sippican Harbor Lighted Green Buoy “3” (Fl G 2.5s) East of Converse Pt	41° 40.50’	70° 44.40’
4	Portable Turning Jibe Mark Used with a Triangle Course	Portable Mark	
5	Sippican Harbor Green Can “5” East of Seal Rocks	41° 40.83’	70° 44.39’
8	Weepecket Rock Lighted Red Gong “8” (Fl R 5s) (off chart)	41° 31.82’	70° 43.43’
A	BYC Yellow Can “A” West of Butler Point	41° 40.43’	70° 43.52’
B	Sippican Harbor Red Nun “6” South of Ram Island	41° 41.61’	70° 45.00’
C	BYC Yellow Can “C” West of Planting Island	41° 41.38’	70° 44.52’
D	BYC Yellow Can “D” Northeast of Seal Rocks	41° 41.12’	70° 44.73’
E	BYC Yellow Can “E” Southeast of Converse Point	41° 40.17’	70° 44.45’
F	BYC Yellow Can “F” South of Bird Island	41° 39.92’	70° 43.03’
G	Sippican Harbor Lighted Red Buoy “2” (Fl R 4s) at Centerboard Shoal, Southwest of Bird Island	41° 39.70’	70° 43.60’
H	BYC Yellow Can “H” at The Bow Bells, East of Point Connett, Mattapoissett	41° 39.20’	70° 44.40’
I	BYC Yellow Can “I” East of Angelica Point	41° 38.50’	70° 45.20’
J	Portable Turning Mark to Leeward of Start/Finish Line	Portable Mark	
K	West Island Red Bell “2SE” (off chart)	41° 34.10’	70° 48.80’
L	BYC Yellow Can “L” West of Cleveland Ledge Light	41° 38.00’	70° 43.00’
M	Bird Island Green Bell “3” Southeast of Bird Island	41° 40.00’	70° 42.37’
N	BYC Yellow Can “N” Southeast of Bird Island	41° 38.86’	70° 42.40’
O	Portable Offset Turning Mark Near Windward Turning Mark	Portable Mark	
P	Portable Alternate Finish Line Pin directly on opposite side of Signal Boat from Starting Line Pin	Portable Mark	
Q	Hog Island Channel Lighted Green Buoy “1” (Qk Fl G) Southwest of Abiels Ledge	41° 40.93’	70° 40.77’
R	Cleveland Ledge Channel Lighted Green Gong “7” (Fl G 4s) Northeast of Cleveland Light	41° 39.12’	70° 41.45’
S	Cleveland Ledge Channel Lighted Green Buoy “3” (Qk Fl G) Southwest of Cleveland Light	41° 37.33’	70° 42.12’
T	BYC Yellow Can “T” Southeast of Angelica Point	41° 38.11’	70° 44.55’
U	Portable Pin End of Start/Finish Line to Port of Signal Boat	Portable Mark	
V	Portable Turning Mark a Short Distance to Windward of Start/Finish Line	Portable Mark	
W	Portable Windward Turning Mark at Bearing and Distance Posted on Signal Boat	Portable Mark	

X	BYC Yellow Can "X" East of Pease's Point	41° 39.50'	70° 45.01'
Y	BYC Yellow Can "Y" Southwest of the Cliffs	41° 40.81'	70° 43.89'
Z	Buzzards Bay Lighted Red Gong "10" (Fl R) Southeast of West Island (off chart)	41° 34.61'	70° 43.25'
Bully Rock	White Cylinder with an orange diamond on two opposite sides and two orange horizontal bands	41° 40.12'	70° 43.33'